

®

# A Different Way to Sit

## Discover



offmax®

# CONTENTS

Case photos	01—05
Key features	06—12
Full functionality overview	13—18
Materials overview	19

Discover



**Discover**  
Archimedes: Giving you a fulcrum to move the world



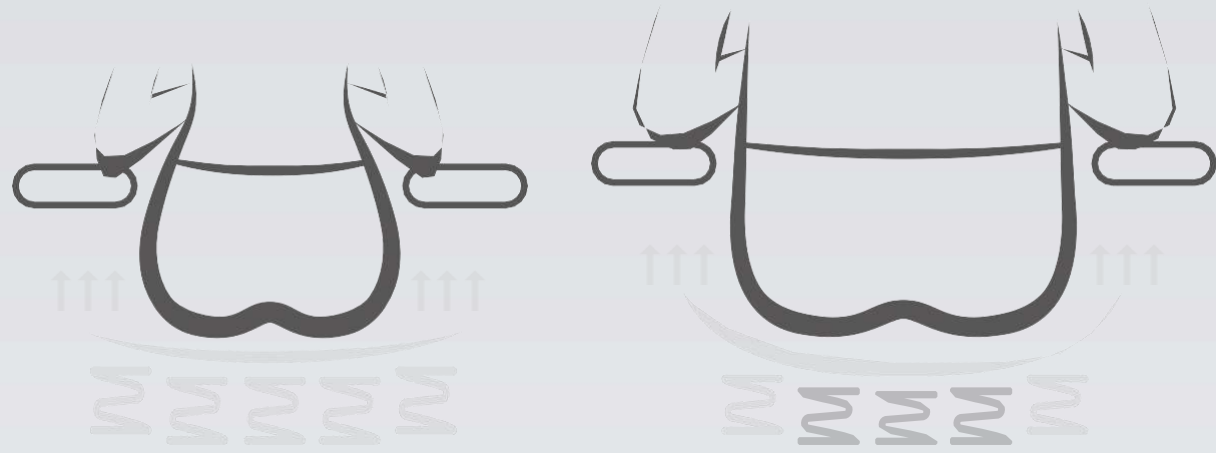




Multi-layered support, redefining seating and creativity  
Unlocking new dimensions of inspiration

# Jelly-like seat cushion with a hip-supporting design that doesn't cause pressure.

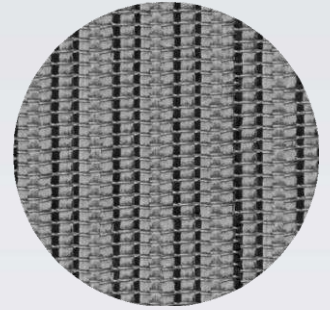
Features dual-layer independent springs and a temperature-regulating gel cushion for breathability and comfort. Provides personalised support for all body weights hip-supporting design that doesn't cause pressure.



Thermoregulating gel



112 independent springs

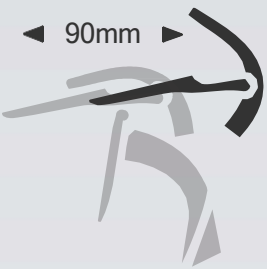


Breathable two-tone mesh



# Meta Neckrest™

The rectus capitis posterior minor is the only muscle in the body that is attached to the spinal cord's covering (the dura mater). When the head is fully supported, the muscles beneath the occiput relax, sending a signal throughout the body to ease tension in the back. The combination of the wide headrest and the backrest provides seamless support for the head, neck, shoulders, back and lower back.



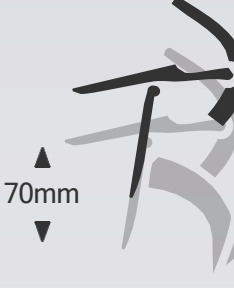
Forward and backward extension range: 90 mm



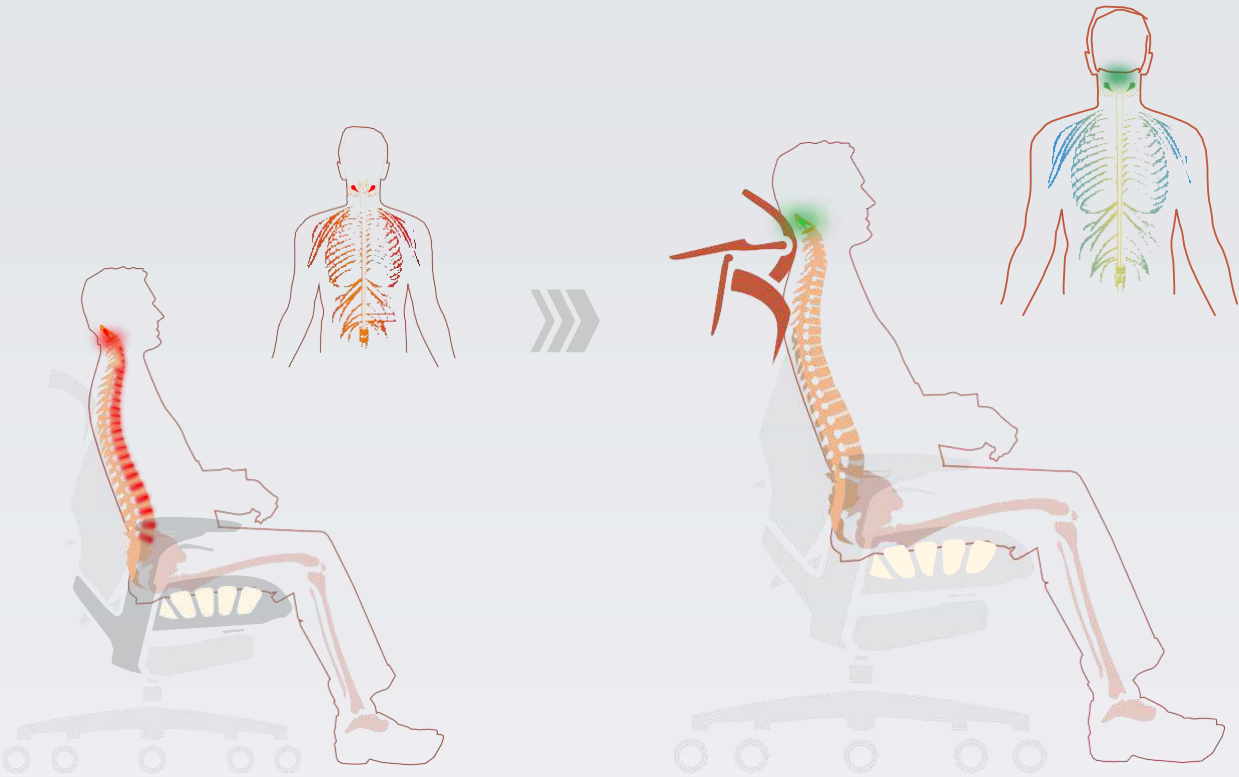
Centre pivot angle: 80°



Headrest rotation angle: 80°



Vertical adjustment range: 70 mm



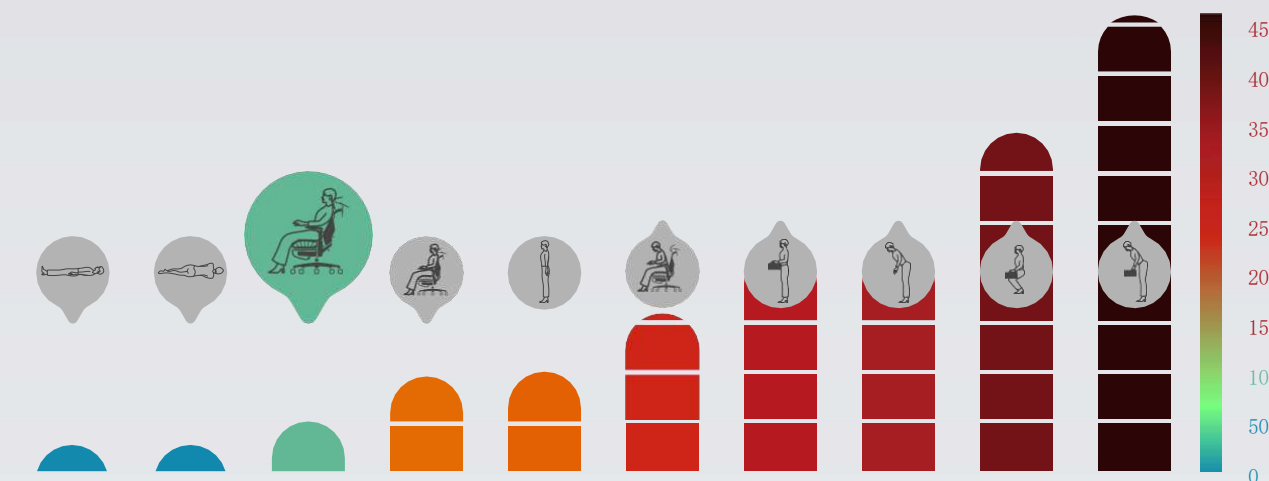


## Rigid Support · Spine Protection

Core anti-deformation carbon fibre provides rigid support  
More than just support for the lumbar and sacral regions it maintains the neutral alignment of the entire spine.

Natural S-shaped curvature ensures rigid support is maintained even in a zero-gravity, slightly reclined position.

It neither collapses, causing hyperlordosis of the thoracolumbar spine, nor does it exaggerate the lumbar curve by focusing support solely on the lower back.

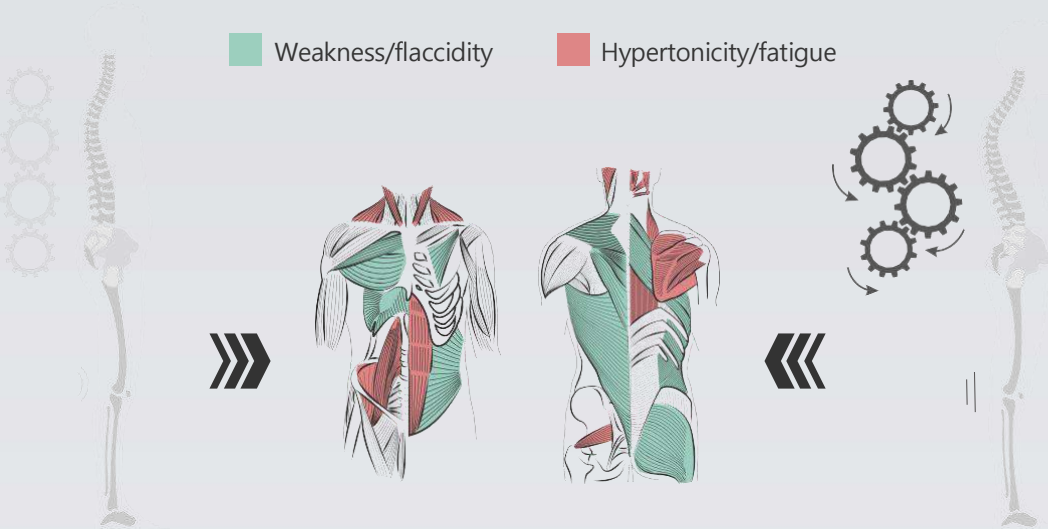


资料来源：Donald A. Neumann, *Kinesiology of the Musculoskeletal System: Foundations for Rehabilitation*, Elsevier Taiwan, 2013-7-1.  
原数据来源：Wilke H-J, Neef P, Caimi M, et al: *New in vivo measurements of pressures in the intervertebral disc in daily life*, Spine 24:755, 1999.

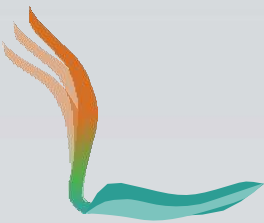
# The Space Recline: A Better Way to Rest

Drift off instantly · Deep sleep and short naps for efficient recharging. Just like an astronaut in space, the 145° comfortable space recline relaxes both body and mind. Enjoy a 'zero-gravity' experience, making the most of your 30-minute lunch break amidst a hectic workday. Sleeps even more comfortably than a Simmons mattress.

145°



Counteracting Gravity · Alleviating Muscle Fatigue When the body remains in postures such as standing upright, sitting upright or leaning forward for prolonged periods, it is subject to the force of gravity. The vertical muscle chains remain in a state of tension, undergoing continuous eccentric or concentric contractions. Meanwhile, the spiral muscle chains remain in a state of relaxation and inactivity.

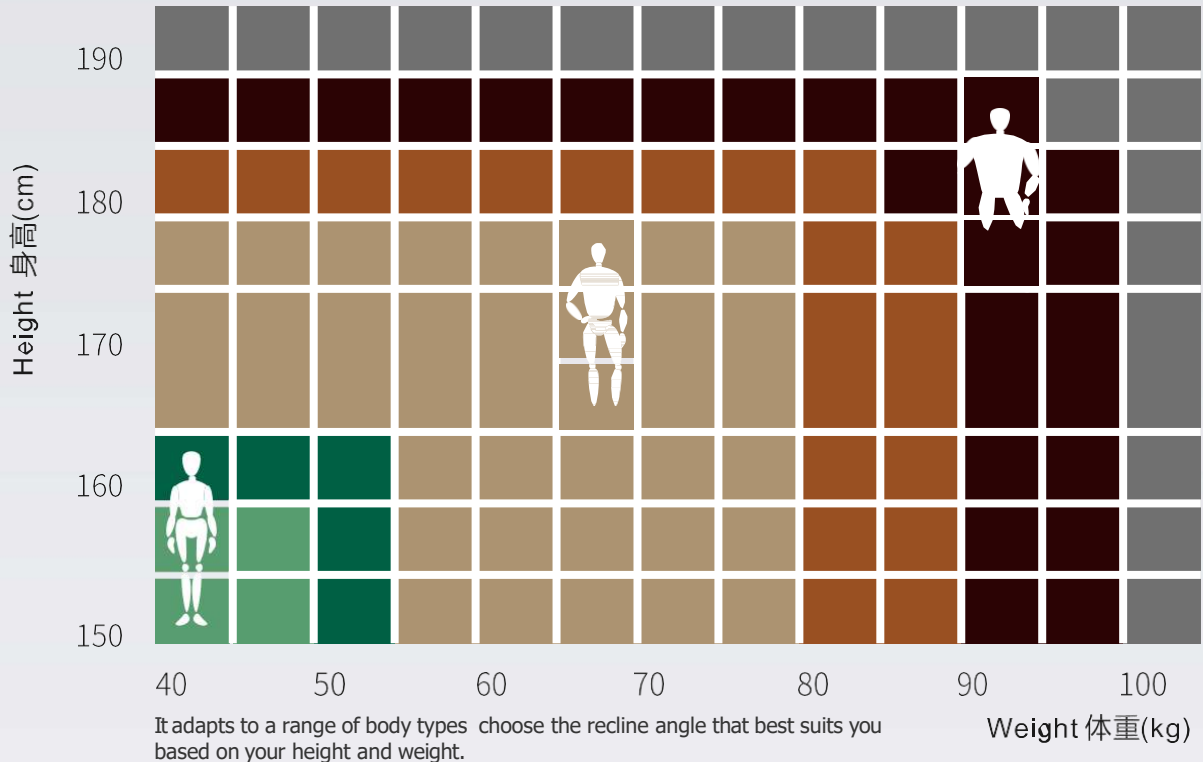


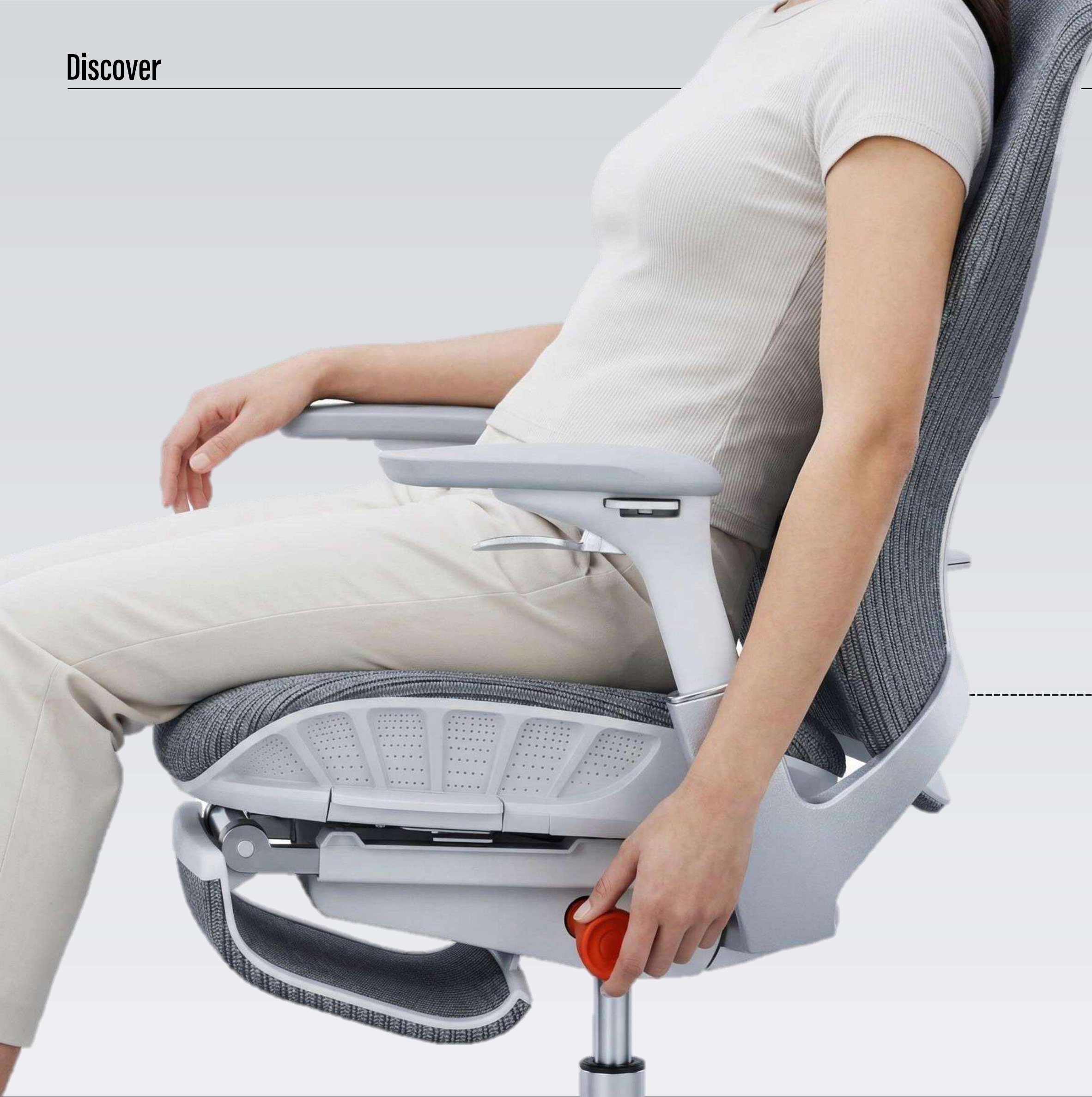
# Biomechanical lumbar support base technology

## Tilt freely, stop at will

The backrest can be locked at any angle within a 40° tilt range. When the tilt lock is released, the spine support function is activated instantly.

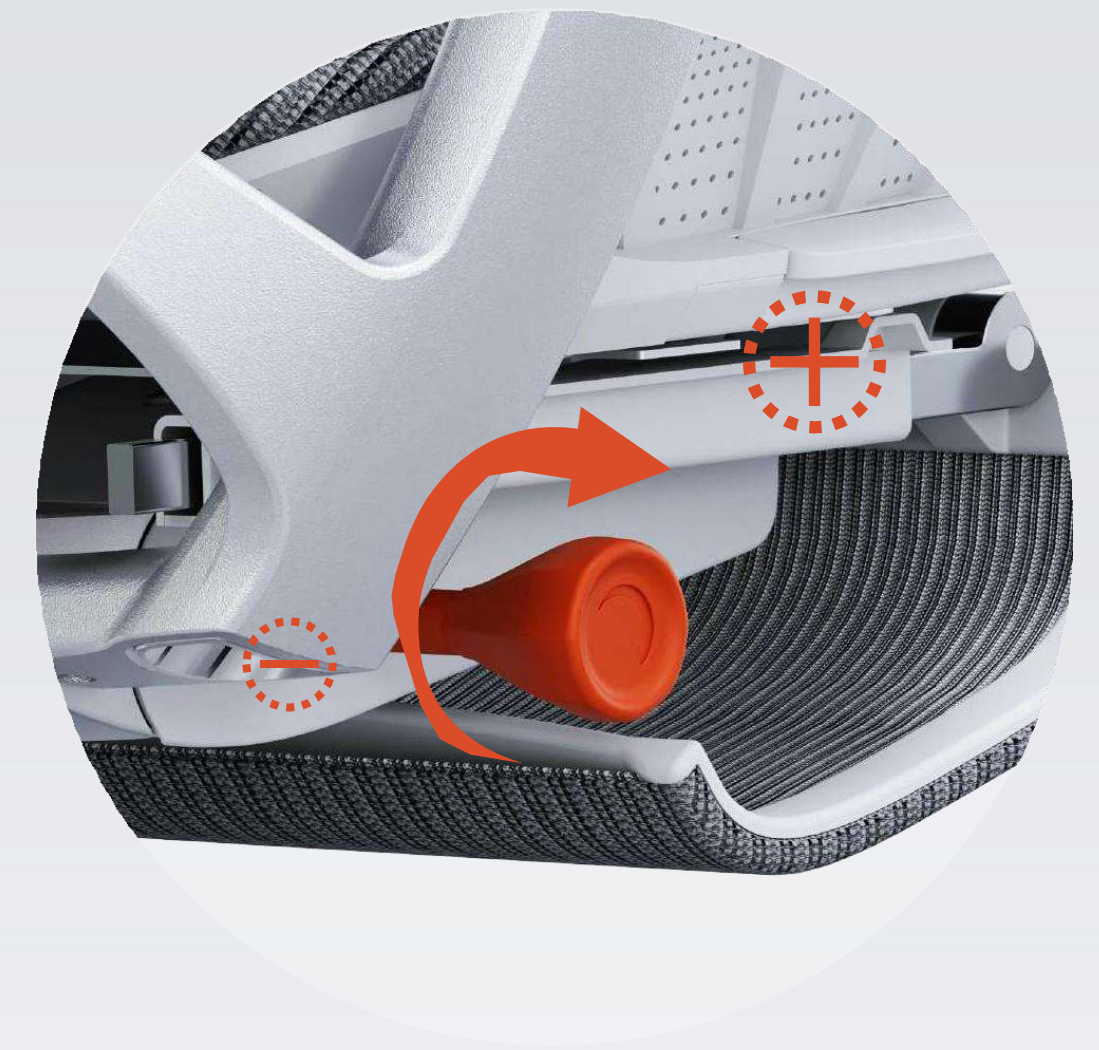
Featuring a biomechanical lumbar support base that tilts in unison. The backrest feels like an extension of your body, allowing you to adjust it to your liking. It adapts to your movements, providing real-time support for your neck, back, waist and hips without any gaps. It helps distribute the impact of gravity at all times, reducing the build-up of muscle fatigue.





## Intelligent Adjustment Flexible Experience

Simple to operate - just rotate to adjust.  
Can be locked at any angle within a 60° range.  
Automatically returns to its original position - no manual pressure required to unlock.





# Graduated Spine Support · More Professional

Personalised spine support featuring 'graduated spine support',  
Tough carbon fibre spine support tailored to different needs.  
Providing spine support of varying intensities.

Regular exercise/better musculoskeletal balance



Prolonged sitting without regular exercise



The lower back is prone to fatigue and even pain.



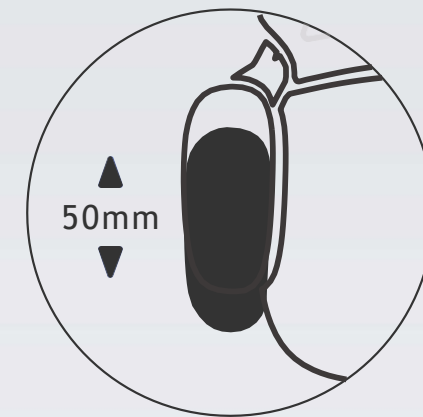
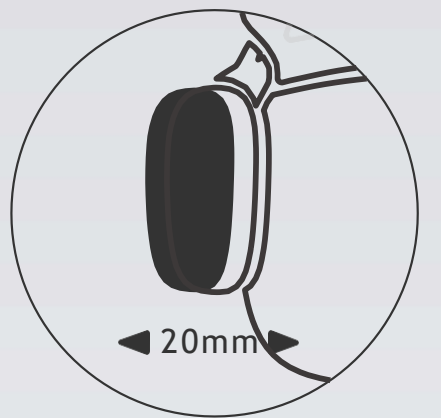
SS

Blue Fit Spinal Protection System™



## 4D armrests with multi-directional adjustment

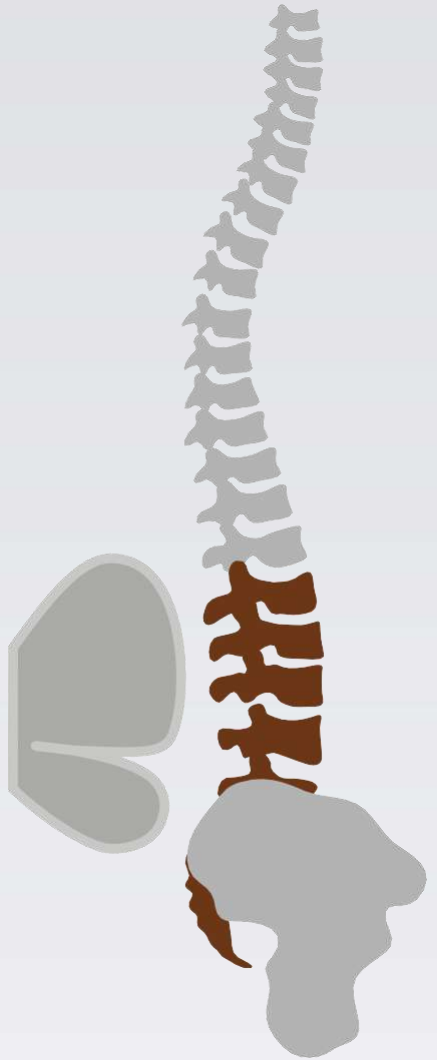
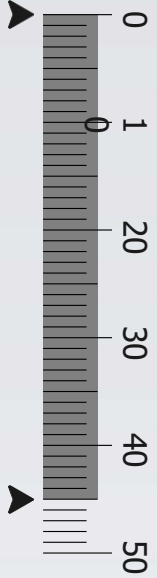
4D multifunctional nylon armrests! 100 mm vertical adjustment  
50 mm forward/backward adjustment, 20 mm left/right adjustment  
25° outward tilt, 75° inward tilt



# The lumbar support cushion provides just the right amount of care

Featuring a unique double-layered pouch design  
Offering comprehensive, comfortable support for the lower back.  
Designed to support the lower back, providing precise support  
and adjustable height to suit different needs.

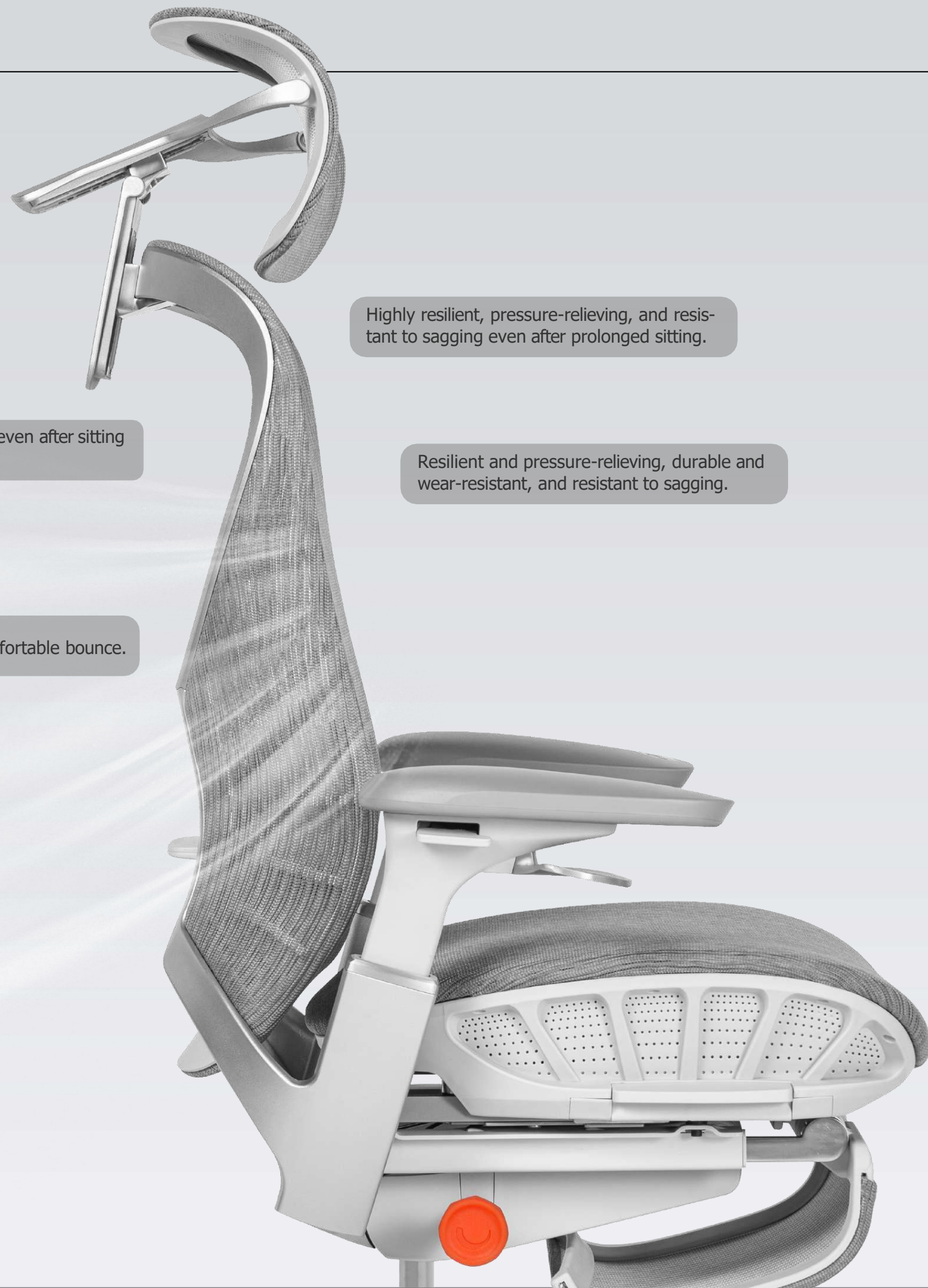
45mm



## Waterfall design for greater leg comfort

The waterfall-style ergonomic design at the front of the seat cushion prevents pressure on the thighs, Contours to the hips and thighs, reducing pressure on the legs.





Stay cool and dry even after sitting for 8 hours.

Highly resilient, pressure-relieving, and resistant to sagging even after prolonged sitting.

Resilient and pressure-relieving, durable and wear-resistant, and resistant to sagging.

Zoned support with comfortable bounce.

## Full-mesh design · Breathable and comfortable all day long

The seat back and cushion feature a full-mesh design for breathability and comfort.

Imported mesh with flexible resilience.

The seat back uses imported 3D mesh, offering high resilience, pressure-distributing support and a comfortable bounce.

A cushion that is breathable.

The cushion's full-mesh design ensures you stay cool and dry even after sitting for 8 hours.

# Discover

---

## Headrest

Extra-wide headrest with multi-directional adjustment.

## Armrests

4D adjustable armrests

## Base

Biomechanical synchronised tilt

## Gas spring

Complies with DIN 4550 safety test, Class 3

## Five-star base

Extra-heavy-duty aluminium alloy five-star base

## Fabric

Leather/Mesh

## Lumbar support

Dual-layer lumbar and sacral support system

## Seat cushion

Independent spring and gel composite seat cushion

## Footrest

Retractable footrest

## Multi-directional castors

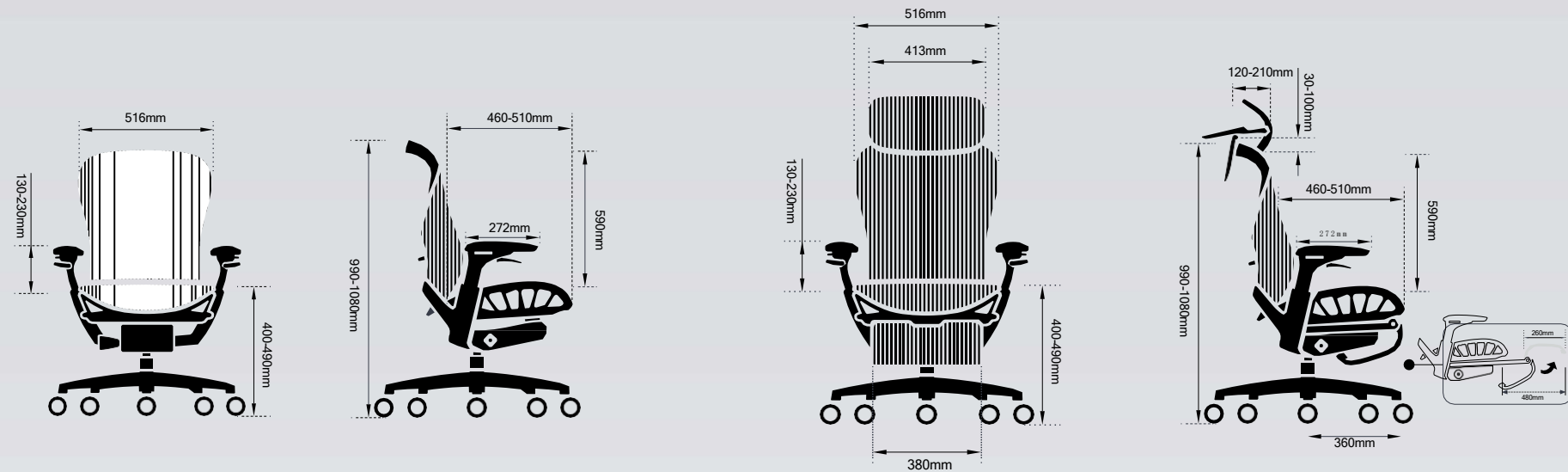
Stable and smooth, gliding effortlessly without damaging the floor.



# Discover

## Specifications

\*The above dimensions are measured by hand and may vary by 1-2 cm



Dimensions ( mm )	
Height( mm )	#100
	#120
Width( mm )	730
Depth( mm )	670

Middle Back	
Height	990-1080
Width	730
Depth	670

High Back	
Height	1022-1182
Width	730
Depth	670

## Frame color



Silver



Dark silver

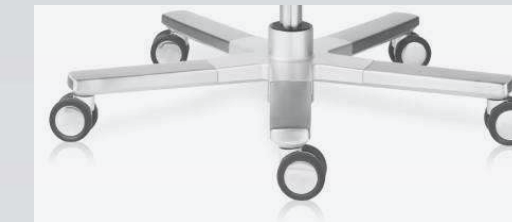


Black

## Base



Polished aluminium chair base

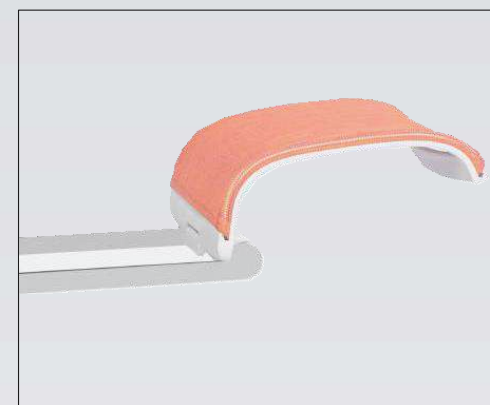


Brushed and glazed chair base

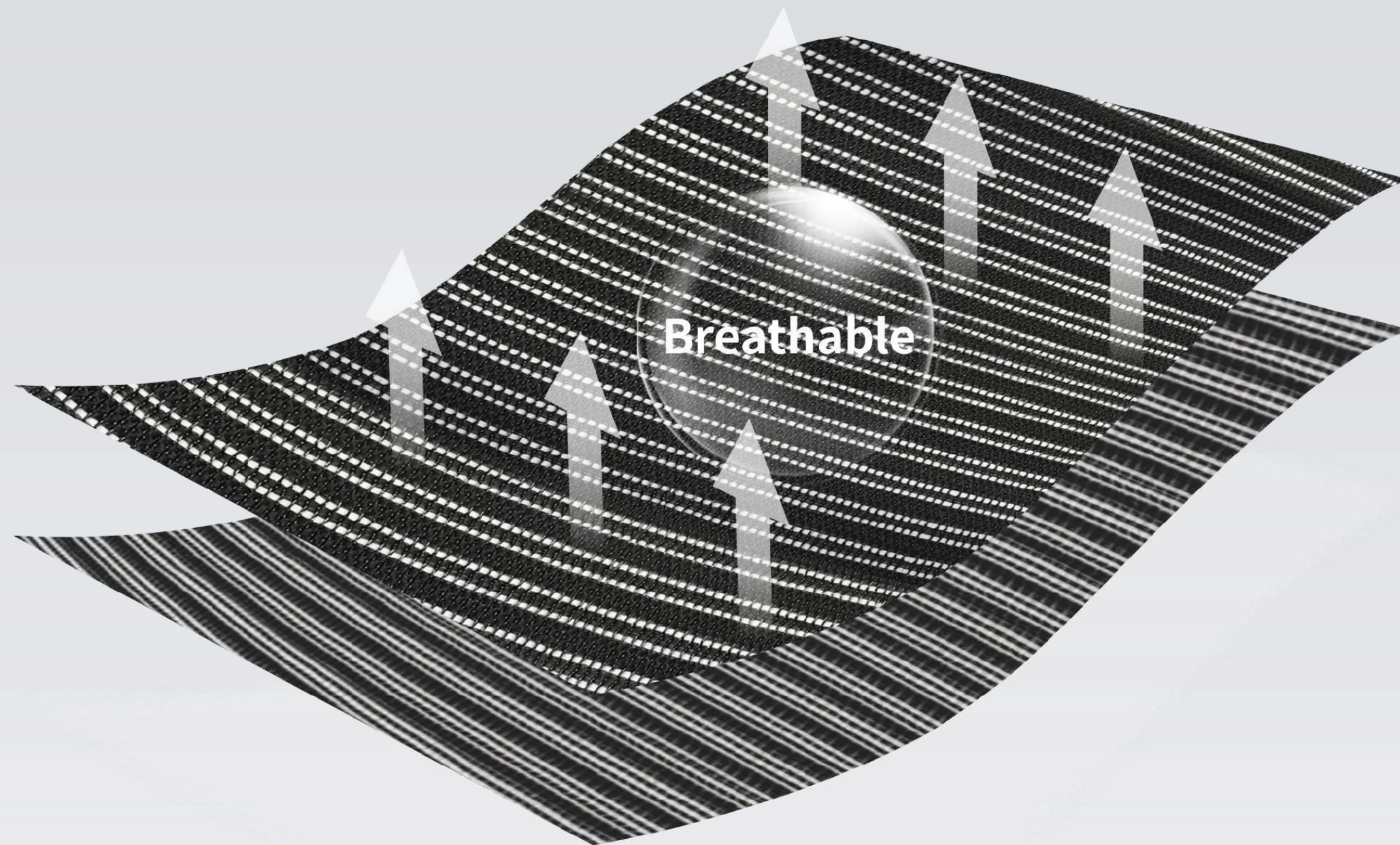


Black nylon chair base

## Accessories



Footrest

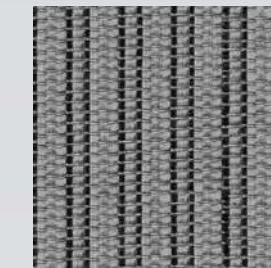


Fabric style / Two-tone mesh with blended yarn

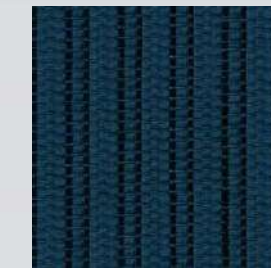
Front view of the chair



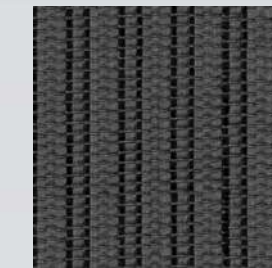
MES01  
Vermilion



MES02  
Magnetic gray



MES03  
Indigo

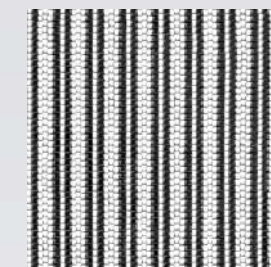


MES04  
Magnetic Black

Back view of the chair



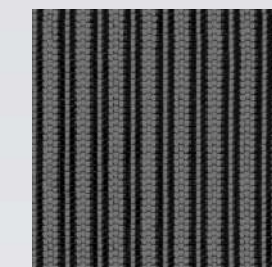
MES01  
Vermilion



MES02  
Magnetic gray



MES03  
Indigo



MES04  
Magnetic Black

Fabric/Characteristics



Breathable



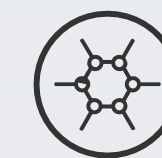
elasticity



Flame  
retardant



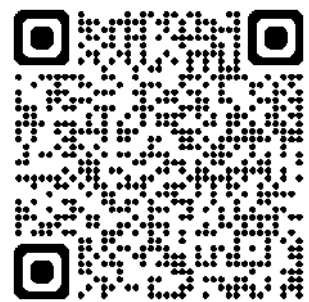
Abrasion  
resistant



Stable



Easy-care



**offmax**<sup>®</sup>

10/F, North Point Industrial Building, 499 King's Road, North Point, H.K. (Office & Showroom)

t +852 2838 3830 | f +852 2553 0088 | w [www.offmax.com.hk](http://www.offmax.com.hk)

---